

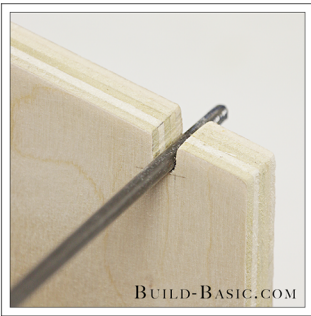
TILT-OUT CLOSET HAMPER

Part of The Build Basic Custom Closet Series



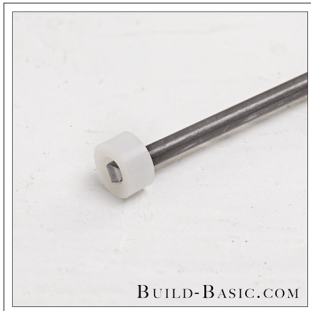
STEP FIVE CUT THE SLOT

Using a handsaw, cut the vertical lines to remove the center of each marked slot.



STEP SIX DRYFIT THE ROD

Using bolt cutters or a saw with a metal cutting blade, cut the metal rod to length. Sand the end of the rod and slots before inserting the rod into the slot to check its length.



STEP SEVEN CAP THE ENDS OF EACH ROD

To prevent the Rods from slipping out of their slots, glue ¼-inch nylon spacers to the ends of each Rod.



STEP EIGHT PREP THE HAMPER FRONT AND BACK WALLS FOR ASSEMBLY

Using a pocket hole jig, drill pocket holes along the side edges of the Front and Back Walls.

THIS PROJECT IS SPONSORED BY



BUILD-BASIC.COM

TILT-OUT CLOSET HAMPER

Part of The Build Basic Custom Closet Series

STEP NINE

PREP THE HAMPER BOTTOM FOR ASSEMBLY

Using a pocket hole jig, drill pocket holes along all edges of the $\frac{3}{4}$ -inch plywood Hamper Bottom. To learn how to use a pocket hole jig, check out my easy Video Tutorial.



STEP TEN

ATTACH THE FRONT WALL TO A SIDE WALL

Apply wood glue to the edge of the Front Wall. Place the edge of the Front Wall onto a Side, flush with its edge, and so that the pocket holes area facing outward--don't worry they'll be concealed by the Door Front later. Now, using a drill/driver, screw a $1\frac{1}{4}$ -inch pocket hole screws through the Front Wall and into the Side Wall to hold the pieces in place.



STEP ELEVEN

ATTACH THE HAMPER BOTTOM

Apply wood glue to two adjacent edges of the Hamper Bottom, and then place it onto the Side Wall, butted against the Front Wall. Drive pocket hole screws through the Hamper Bottom and into the Side and Front Walls.



STEP TWELVE

ATTACH THE BACK WALL

Apply wood glue to the remaining end of the Hamper Bottom, and to the edge of the Back Wall. Place the Back Wall onto the Side Wall, butted against the Hamper Bottom. Screw the Back Wall to the Side and Bottom.



THIS PROJECT IS SPONSORED BY



BUILD-BASIC.COM

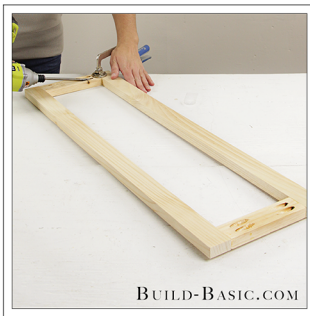
TILT-OUT CLOSET HAMPER

Part of The Build Basic Custom Closet Series



STEP THIRTEEN ATTACH THE REMAINING SIDE WALL

Apply wood glue to the exposed edge of the Front and Back Walls, and Hamper Bottom. Place the remaining Side Wall onto the assembly, and then screw it into place.



STEP FOURTEEN FRAME THE DOOR FRONT

Cut the 1 x 2 Door Frame boards to size. Drill two pocket holes at the ends of the horizontal Door Frame Rails. Apply wood glue to the ends of the Rails, and then place them on the work surface between the Stiles. Drive 1¼-inch pocket hole screws through the Rails and into the Stiles to hold the frame together.



STEP FIFTEEN PREP THE DOOR PANEL

Lay the Door Frame onto a piece of ½-inch plywood. Mark the inside edges of the assembled Door Frame on the plywood. Using a table saw or a circular saw and my easy DIY Cutting Fence, cut the ½-inch plywood Door Panel to size. Finish prepping the Door Panel by drilling pocket holes around the perimeter of the panel--just be sure to reset your pocket hole jig and drill bit collar to the placement recommended for ½-inch-thick material.



STEP SIXTEEN INSTALL THE DOOR PANEL

Apply wood glue to the edges of the Door Panel, and then place it into the assemble Door Frame. Adjust the Panel so that the surface with the pocket holes--the backside of the panel--is flush with the backside of the Frame. Drive 1-inch pocket hole screws through the Panel and into the Frame to hold the pieces in place.

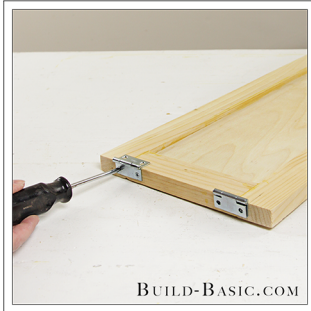
THIS PROJECT IS SPONSORED BY



BUILD-BASIC.COM

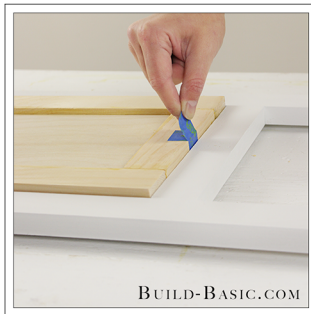
TILT-OUT CLOSET HAMPER

Part of The Build Basic Custom Closet Series



STEP SEVENTEEN ATTACH THE HINGES TO THE DOOR

Using a drill/driver, attach the hinges to the bottom edge of the Door Frame, about 1 inch from each edge.



STEP EIGHTEEN DRYFIT THE DOOR

Using painter's tape, create a "tab" at the top edge of the Hamper Door. Place the Door into the Cubby's Face Frame to check that it fits properly with a light gap (about 1/16-inch) along the top and sides. (Note: this step can be completed while the Cubby's Face Frame is installed or uninstalled, as shown.)



STEP NINETEEN ATTACH THE HINGES TO THE CUBBY

Using a drill/driver, attach the hinges to the Rail of the Cubby's Face Frame so that the knuckles of the hinge set proud of the front edge. (Tip: In woodworking, the word "Proud" means to stick out past flush.)



STEP TWENTY INSTALL THE HAMPER

Tilt the Door open. Apply wood glue to the backside of the Door Front, and then center the assembled Hamper on the Door. Screw four 1¼-inch screws through the Front Wall of the Hamper and into the Stiles of the Door to hold the pieces in place.

THIS PROJECT IS SPONSORED BY



BUILD-BASIC.COM

TILT-OUT CLOSET HAMPER

Part of The Build Basic Custom Closet Series

STEP TWENTY ONE CUT THE SLOT

To prevent the hamper from falling all the way open, attach a chain to the Hamper and Cubby. To attach the chain to the Cubby, place a 5/8-inch wood screw through a link in the chain, and then drive it into the inside of the Cubby Wall near the back, as shown. Stretch the chain forward, and shorten it so that only about 1 inch extends beyond the Cubby's Face Frame.



STEP TWENTY TWO ATTACH THE CHAIN TO THE HAMPER

Tilt the hamper forward, and then drive a 5/8-inch wood screw through the end of the chain and into the outside of the hamper's Side Wall, near its back edge, as shown.



THIS PROJECT IS SPONSORED BY



BUILD-BASIC.COM